

# **SR 520 – Portage Bay Bridge and Roanoke Lid Project**

## **Major Public Project Construction Noise Variance public information session**

### **Zoom Webinar**

**Dawn Yankauskas**

SR 520 Deputy Program Administrator

**Todd Harrison**

SR 520 Director of Project Development

**Jim Farris**

SR 520 Portage Bay Bridge and Roanoke Lid Project Manager

**Lawrence Spurgeon**

SR 520 Program Environmental Manager

**Ginette Lalonde**

Noise Specialist

**David Goldberg**

SR 520 Program Ombudsman and Community Liaison

**Dave Becher**

SR 520 Director of Construction

**Jan. 12, 2022  
5:30 pm**



# SR 520 Program budget update



*Aerial photo of SR 520 looking east, with the Portage Bay Bridge in the background*



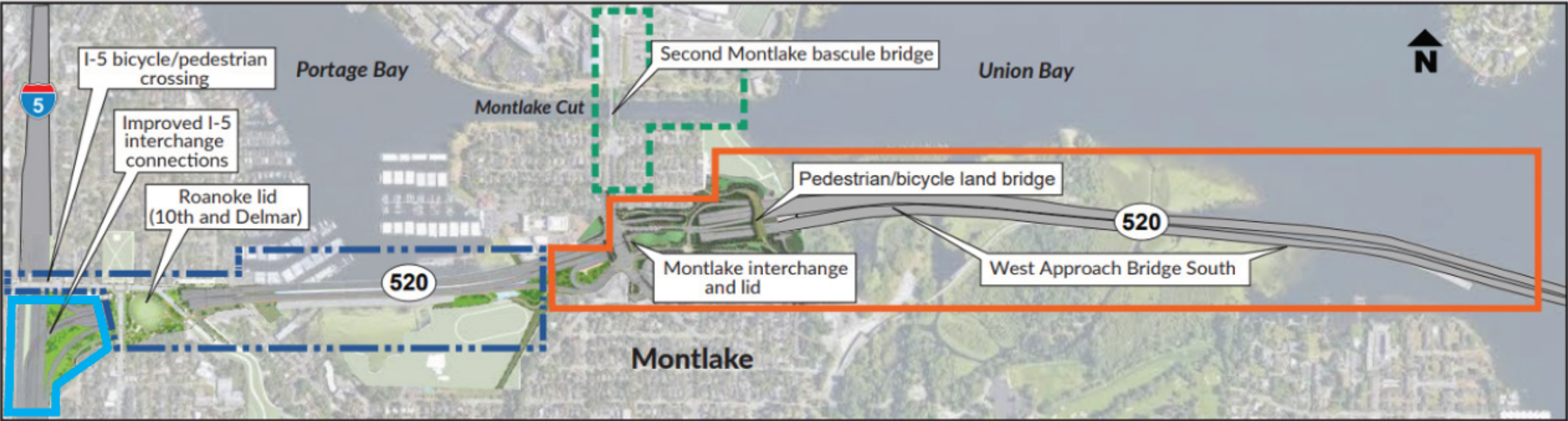
# Meeting agenda

- Introductions **(5:30 pm)**
- SR 520 Program update **(5:35 pm)**
- Portage Bay Bridge and Roanoke Lid Project update **(5:45 pm)**
- MPPCNV application overview **(6:00 pm)**
- Q&A and feedback **(6:20 pm)**
- Adjourn **(7:00)**



*Montlake Boulevard overpass removal, Oct. 23, 2021*

# SR 520 Bridge Replacement & HOV Program overview



**SR 520/I-5 Express Lanes Connection Project**  
Construction started: 2021  
Estimated duration: 3 years

**Portage Bay Bridge and Roanoke Lid Project**  
Construction estimated start: 2024  
Estimated duration: 6 years

**Montlake Cut Bascule Bridge Project**  
WSDOT will coordinate with community stakeholders and agency partners regarding project scope and timing

**Montlake Project**  
Construction started: 2019  
Estimated duration: 4-5 years

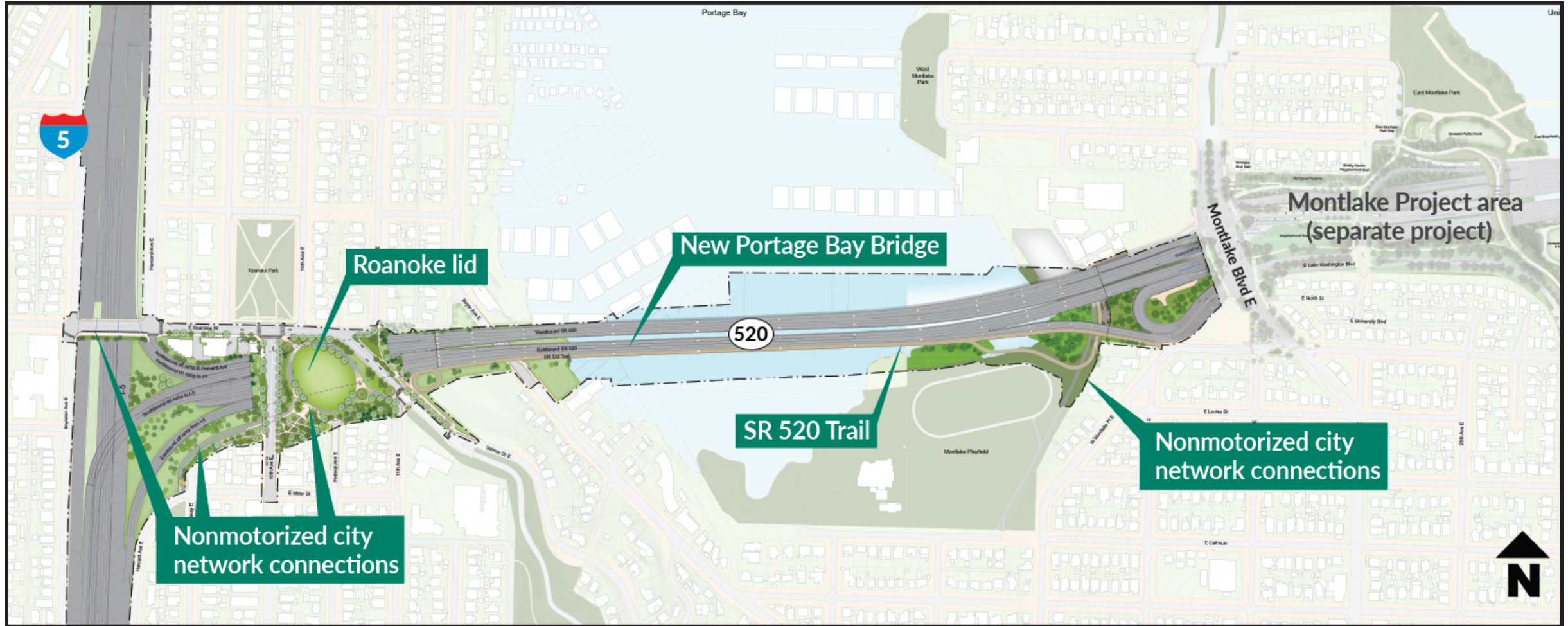


SR 520/I-5 Express Lanes Connection Project



# Portage Bay Bridge and Roanoke Lid overview

## Major project elements





# Portage Bay Bridge



*Conceptual rendering of new Portage Bay bridges, looking southwest*



# Roanoke Lid



*Conceptual plan of Roanoke Lid*



*Conceptual rendering of outlook at Federal Ave, looking north*



*Conceptual rendering of 10<sup>th</sup> Ave outlook, looking east*



## SR 520 Portage Bay Bridge & Roanoke Lid Project timeline

- **Present:** Technical coordination, permitting processes, and draft RFP language
- **Late 2022:** Publish Request for Qualifications (RFQ)
- **Early 2023:** Publish Request for Proposals (RFP)
- **Summer 2023:** Award design-build contract
- **2024:** Begin construction
- **2024-2030:** Estimated Construction duration



# SR 520 nighttime construction work

## Why is nighttime work necessary?

- SR 520 Portage Bay Bridge and Roanoke Lid Project construction during nighttime hours is necessary in order to:
  - Shorten project duration and impact to neighboring communities
  - Avoid adding to existing congestion on SR 520 and I-5
  - Provide a safe work environment for the contractor and traveling public
  - Minimize cost to taxpayers



*SR 520 project work site at night*

## When would the variance be applicable?

- During nighttime construction hours of the SR 520 Portage Bay Bridge and Roanoke Project, defined as 10 p.m. to 7 a.m. on weekdays, and 10 p.m. to 9 a.m. on weekends and legal holidays



# What is an MPPCNV?



*Aerial view of demolition of the Montlake Boulevard overpass*

- **Major Public Project Construction Noise Variance** is as a variance for a public facility that has a substantial effect on public safety, health and welfare, and the provision of public services, including transportation.
  - The MPPCNV is a noise variance that sets limits for the allowable nighttime noise for a construction project.
  - The process is tailored specifically for major public construction projects and is administered by the Seattle Department of Construction and Inspections.
  - This variance will apply only to the Portage Bay Bridge & Roanoke Lid Project.



# What's included in WSDOT's application?

- Project descriptions and proposed construction activities
- WSDOT's baseline noise measurements and proposed nighttime noise limits for the SR 520 Portage Bay Bridge & Roanoke Lid Project
- A summary of proposed construction activities and staging areas
- A Noise Management and Mitigation Plan.
- An overview of planned public outreach and process to resolve noise complaints during SR 520 Portage Bay Bridge & Roanoke Lid Project construction
- How construction noise will be monitored and how the contractor will comply with MPPCNV requirements
- How WSDOT will track contractor's compliance and resolve public complaints.



# SR 520 Portage Bay Bridge & Roanoke Lid Project construction activities

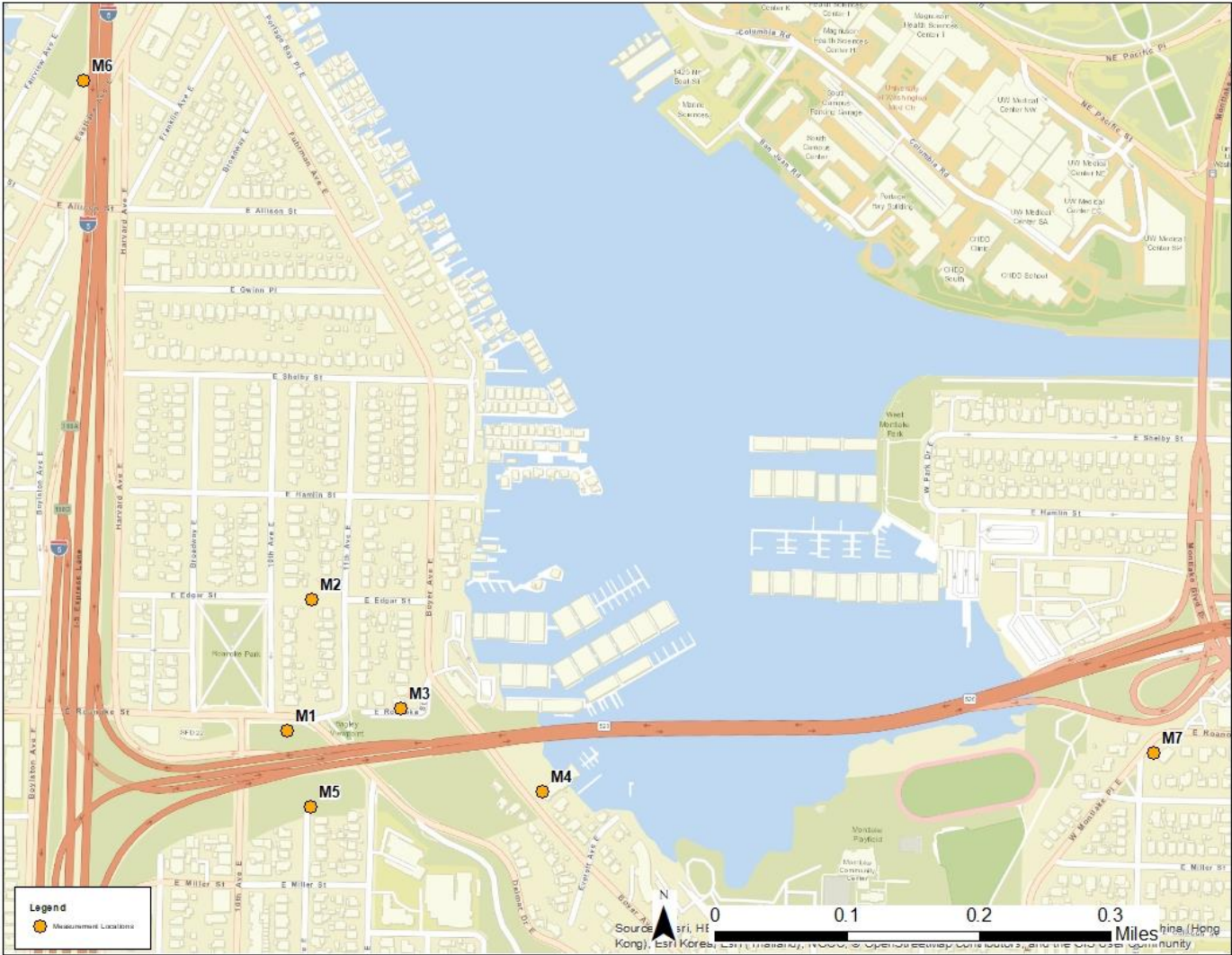
- WSDOT used anticipated nighttime construction activities to conduct noise modeling for the project
- Some nighttime work will include non-impact work like staging and preparing for daytime construction on the Portage Bay Bridge.
- WSDOT's application requests a limited number of nights with impact work in order to complete critical activities such as:
  - Excavation of work areas
  - Roadway and structure demolition and removal
- Nighttime construction activities are not expected to occur continuously on all nights for consecutive weeks, and it is likely there will be breaks in the activities.
- WSDOT has developed a Noise Management and Mitigation Plan. If needed, the project contractor will submit any updates to the plan prior to construction



*SR 520 project nighttime construction work*



# Baseline noise monitor locations



# Proposed limits in WSDOT's application

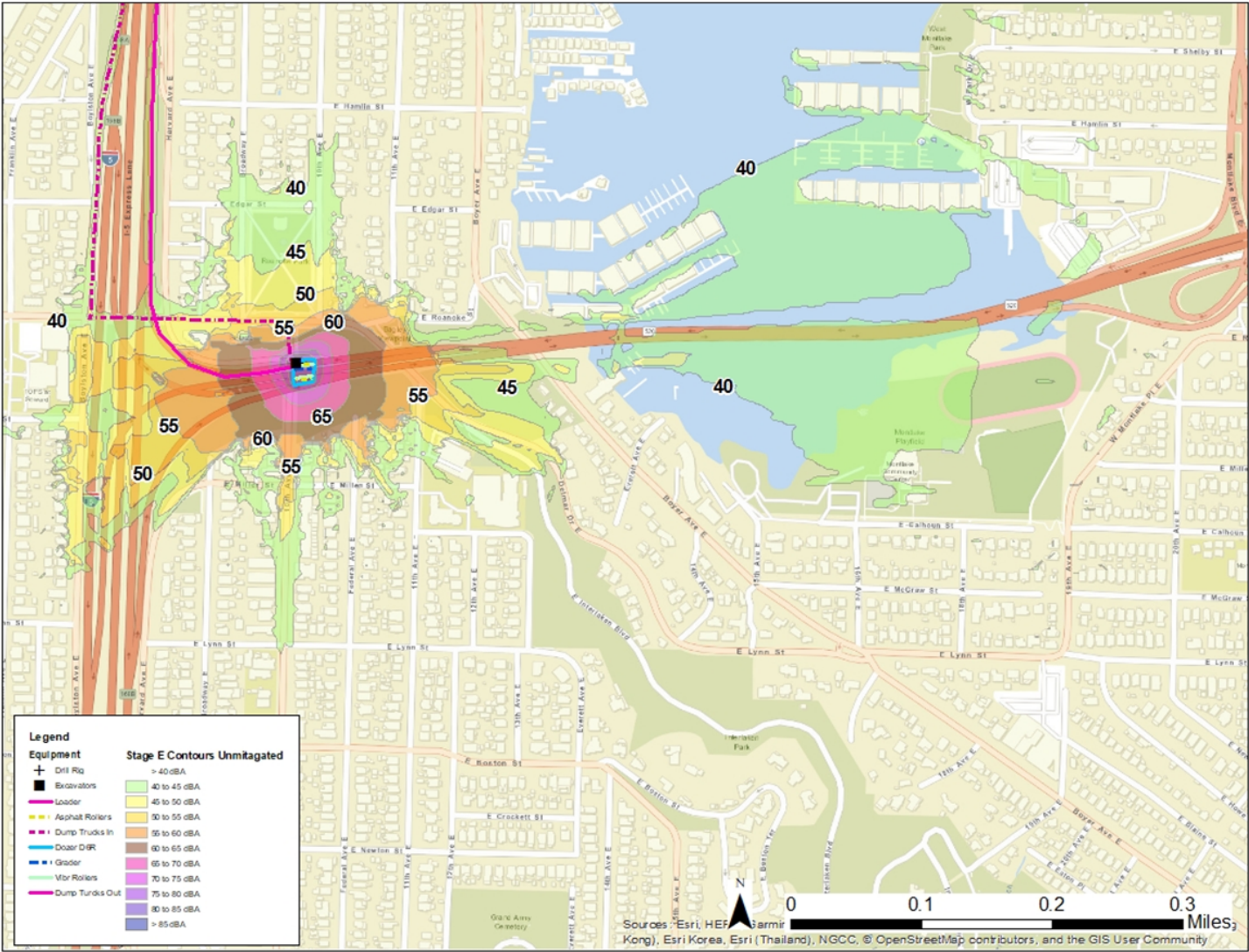
- WSDOT's application requests the following for nighttime noise levels and activities within the project area:
  - A limit of six decibels higher than the current hourly averages
  - A six-year variance, to cover the estimated duration of construction activities
  - Noise monitoring and compliance requirements and procedures



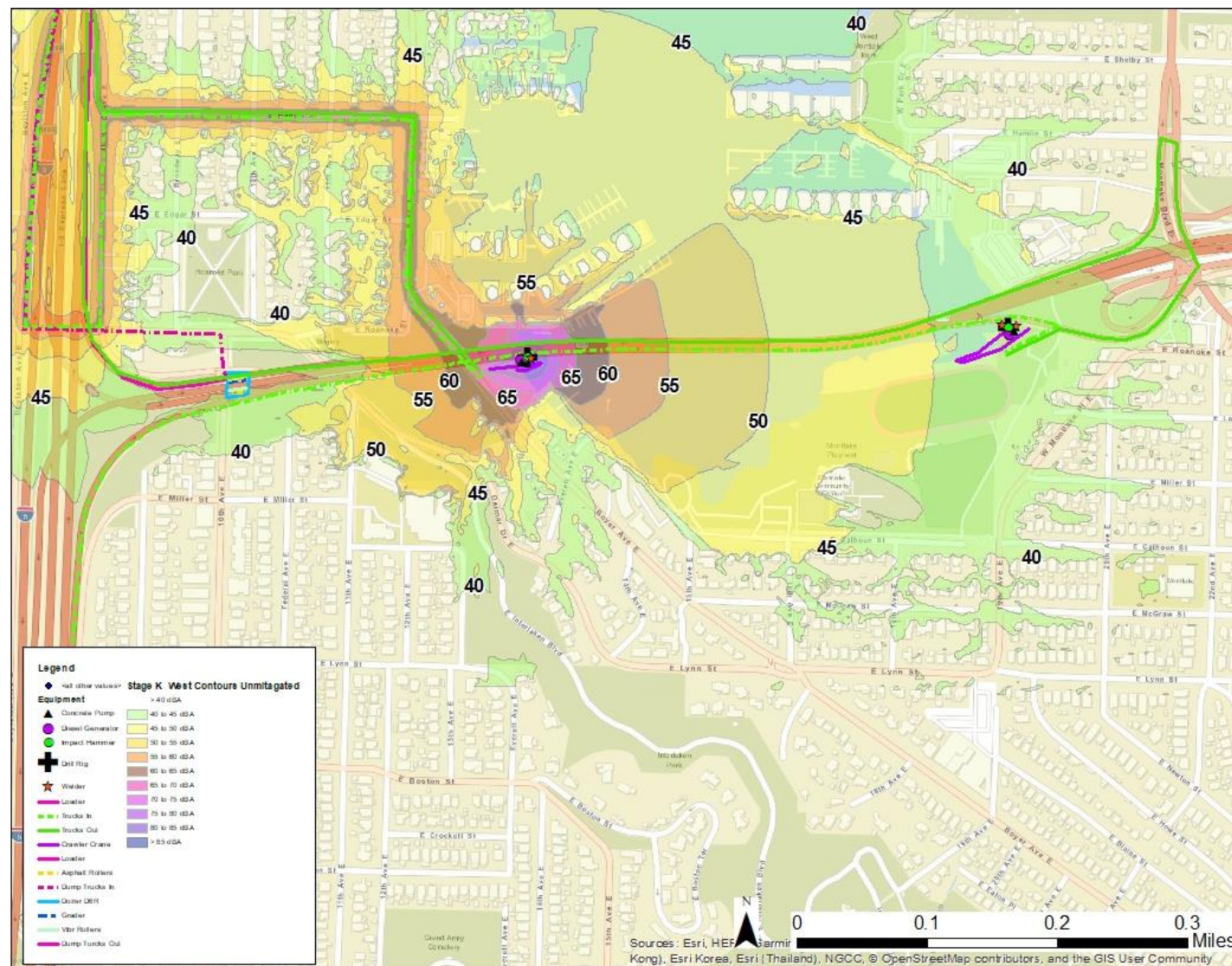
*Crews conduct highway paving activities at night*



# Noise modeling and analysis



# Noise modeling and analysis





# Noise monitoring and compliance

## WSDOT will:

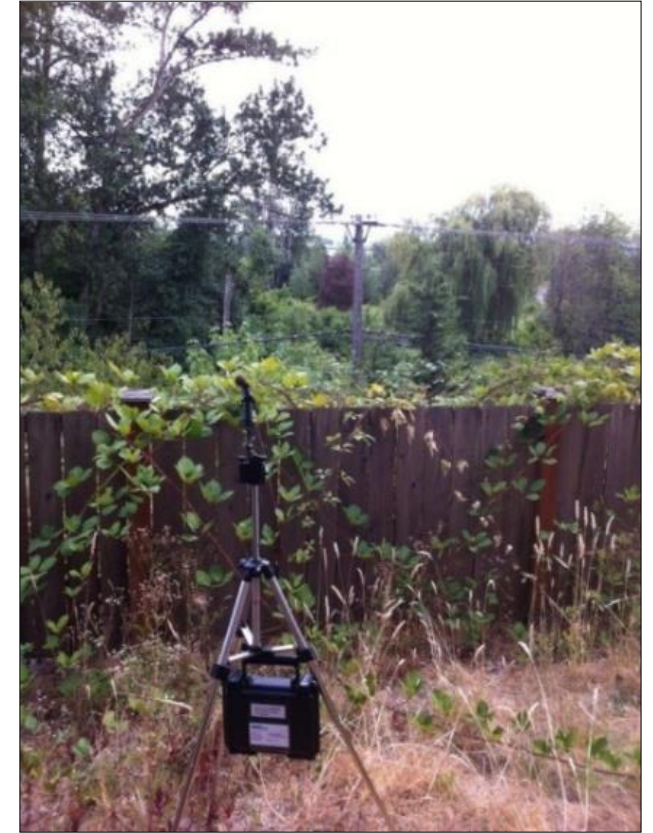
- Provide an on-site independent noise inspector who reports all non-compliance events directly to SDCI
- Continue comprehensive and ongoing public involvement activities
- Provide a 24-hour construction hotline

## The project contractor will:

- Meet the requirements of the noise variance
- Update the Noise Management and Mitigation Plan, if needed
- Install noise monitor devices on site
- Monitor noise continuously during nighttime construction activities

## The independent noise inspector will:

- Monitor project contractor compliance with the noise variance
- Respond to all noise complaints, and modify or stop project work if necessary



*Example of noise monitor device*

# MPPCNV Application Key Steps

## January 12, 2022

- WSDOT informational public meeting

## February 2022

- WSDOT to submit MPPCNV application to the SDCI with a Noise Management and Mitigation Plan
- SDCI to publish WSDOT's application online and begin 4-week public comment period

## Spring/Summer 2022

- SDCI hosts a public meeting on WSDOT's application

## Summer/Fall 2022

- SDCI publishes decision on SR 520 Portage Bay Bridge & Roanoke Lid Project MPPCNV application
- 10-day appeal period begins if variance is issued

## 2023/2024:

- If needed, project contractor submits updates to the Noise Management and Mitigation Plan in advance of construction

## 2024/2025:

- SDCI will review and may modify the variance conditions after the first year of construction



# Q&A

**All attendees are muted.**  
To adjust your audio settings  
during the meeting, click on  
**Audio Settings.**

Please use the  
**Q&A window** to ask  
questions. The “Chat”  
function is disabled.



# Thank you for joining us!

**For general SR 520 Program information:**

- **Visit:** [www.wsdot.wa.gov/projects/SR520Bridge](http://www.wsdot.wa.gov/projects/SR520Bridge)
- **E-mail:** [SR520Bridge@wsdot.wa.gov](mailto:SR520Bridge@wsdot.wa.gov)
- **Call:** 206-770-3554
- **Portage Bay Bridge and Roanoke Lid FAQ**  
<https://sr520construction.com/FutureConstructionProjects>
- **Sign up for Rest of the West Email updates:**  
<https://public.govdelivery.com/accounts/WADOT/subscriber/new?preferences=true#tab1>